

Cases

Case 1

Curved root canal (left maxillary first molar)



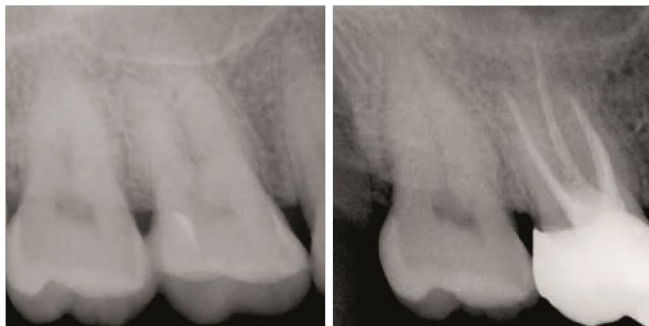
Preoperative

Postoperative

Mesiobuccal (MB) and distobuccal (DB) roots of #26 are constricted, and only a few millimeters of patency was achieved with hand files. Then a mechanical glide path using OGP2 was established. OGP2 could obtain glide path preparation without any difficulties such as broken files or ledge formation to constricted canals even to DB, which has severe constriction and S-shape curvature. Total time to complete mechanical glide path using OGP2 was 5 minutes.

Case 2

Sclerosed root canal (right maxillary first molar)



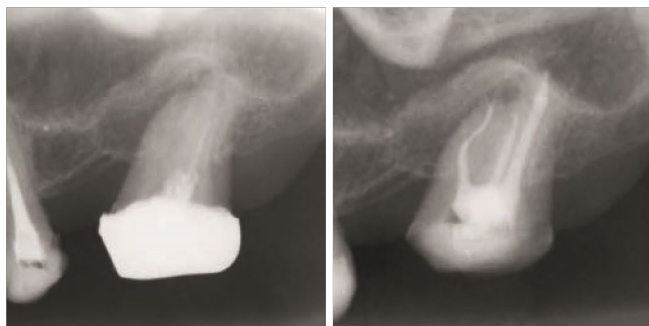
Preoperative

Postoperative

The radiographic images highlight that a root canal system was still present. The detection of the root canal orifice and root canal preparation were difficult due to the presence of mineralized tissue. The OGP2 mode contributed to attaining patency and glide path on 4 roots, including the second mesiobuccal (MB2) root canal. Subsequently, root canal preparation was completed using OTR mode on the device. All procedures ranging from the patency of the 4 root canals to the final root preparation were carried out in approximately 7 minutes.

Case 3

Patency abandoned (left maxillary second molar)



Preoperative

Postoperative

Retreatment case of #37, root canal patency was not obtained during the past treatment. After root canal orifices are specified, patency was obtained using OGP2. Both mesiobuccal (MB) and distobuccal (DB) canals have S-shape curvature, and especially MB was challenging. If only with hand instruments, treatment time for MB would be extremely long. By using OGP2, total time needed for glide path preparation was 14 minutes in total; 6 minutes for MB, 5 minutes for DB and 3 minutes for palatal canal.

Clinical images and comments are provided by: Dr. Toshihiro Ushikubo
Dr. Motoki Okamoto
Dr. Tai Gega

*The images shown here represent examples of post surgery progress at the clinic that provided the photos.

*A pre-sales clinical survey conducted by J.MORITA MFG.CORP. showed that of the dentists that used OGP2, 77% used it for patency and 86% used it for glide path.